

Our Market Space

We are experts in project management, and we are experts at turning your project management data into powerful Power BI reports. And we can make this happen with the press of the button. Furthermore, we have experience across industries and deep domain knowledge in some such as Life Sciences.

Our clients spend a lot of time and effort building out their project portfolios into a tool that enables them to easily plan and track their projects. With Power BI, we can help them make it easy to turn that data into outstandingly useful portfolio reports.

Our Reporting Capabilities Apply to All Project Management Products

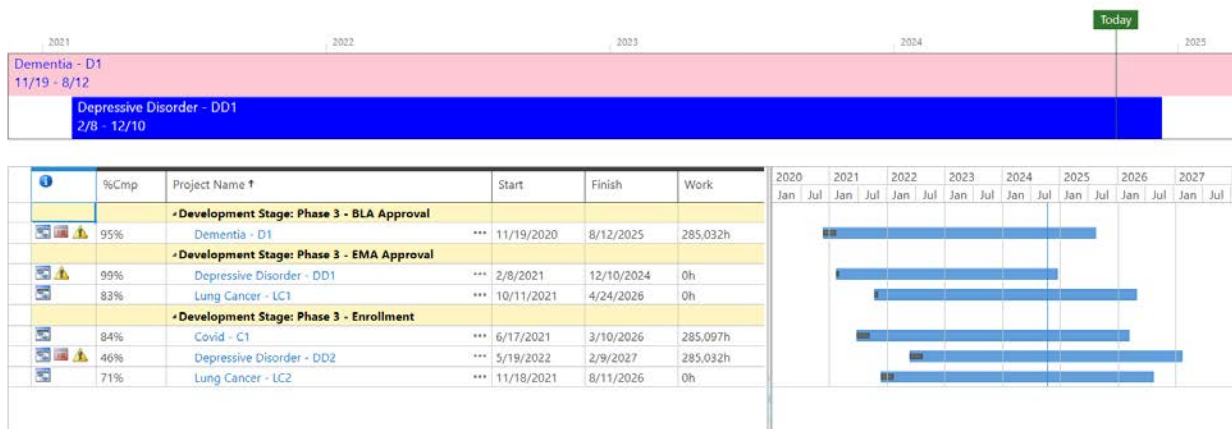
Our project management process knowledge and report building capabilities extend beyond any one specific PM tool so we can use Power BI to report from a broad spectrum of tools. We just need the capability to extract the data using one of Power BI's extensive set of data source connectors. For Instance, Microsoft Excel extracts will do and a wide range of products support these.

Life Sciences Generic Business Case Reporting Example

Let's consider a Life Sciences program portfolio that our fictitious client has spent a lot of time and effort to put into a project management tool so they can easily plan and track their medicinal development pipeline's road to commercialization.

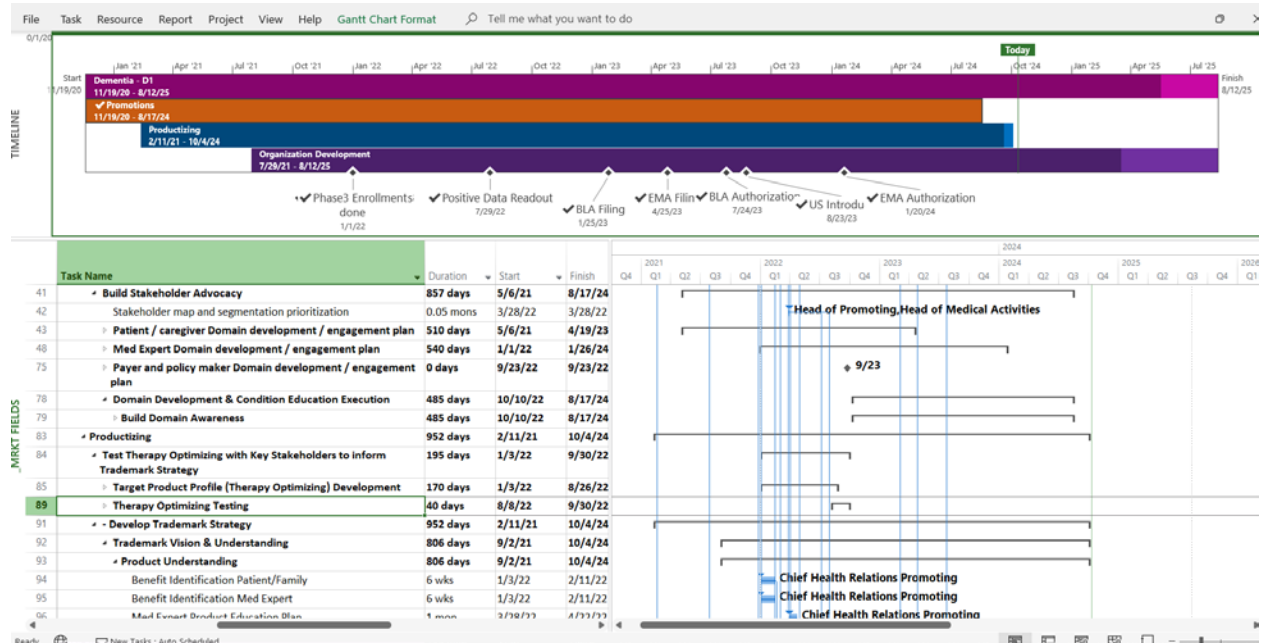
Moreover, WGA has extensively used Microsoft Project, so let's assume the development pipeline portfolio is in Microsoft Project into Power BI. In this scenario, the client portfolio view may look like this in Project Online (PWA).

Project Online Portfolio View



The detailed plans are vital in the biotech development process so in our system we represent each program by a detailed Microsoft Project schedule. Thus, planning and tracking of the discrete work going on across the teams can be easily managed as shown in the sample schedule here.

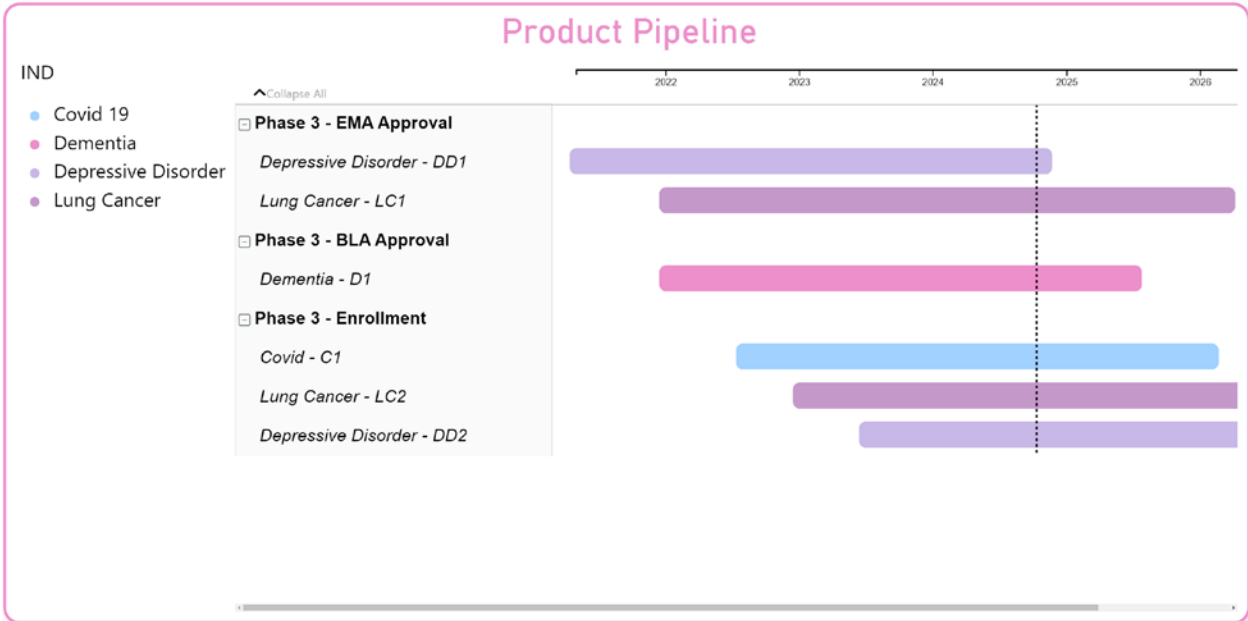
Program Schedule in Microsoft Project



Portfolio Visuals

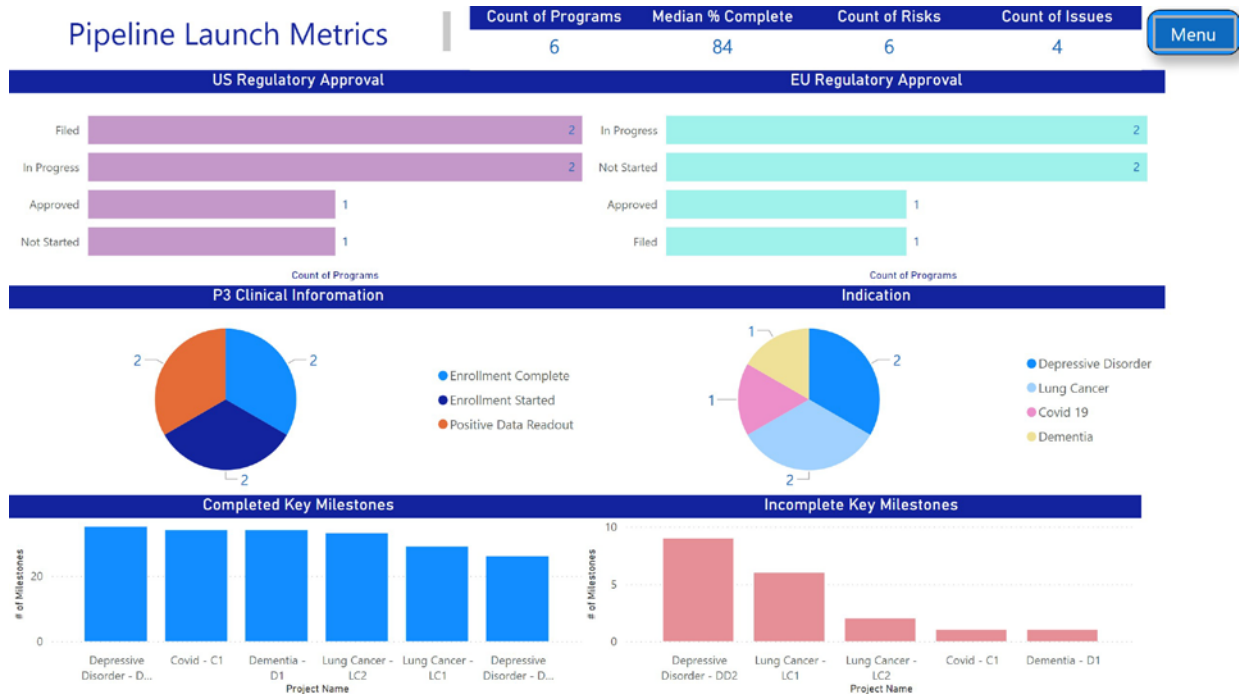
Power BI Timeline

Now they ask us to help them make it easy to generate their stakeholder reports. These two Microsoft products work seamlessly together so it is easy for us to invoke a connector to pull the Project Online data into a Power BI data model. And once there the Biotechnology client would want a 50,000 foot pipeline program view so our first report is a timeline view like this one shown in Power BI. In Power BI it is easy to organize programs by various dimensions such as indication and commercialization phase as we see here.



Pipeline Metrics Dashboard

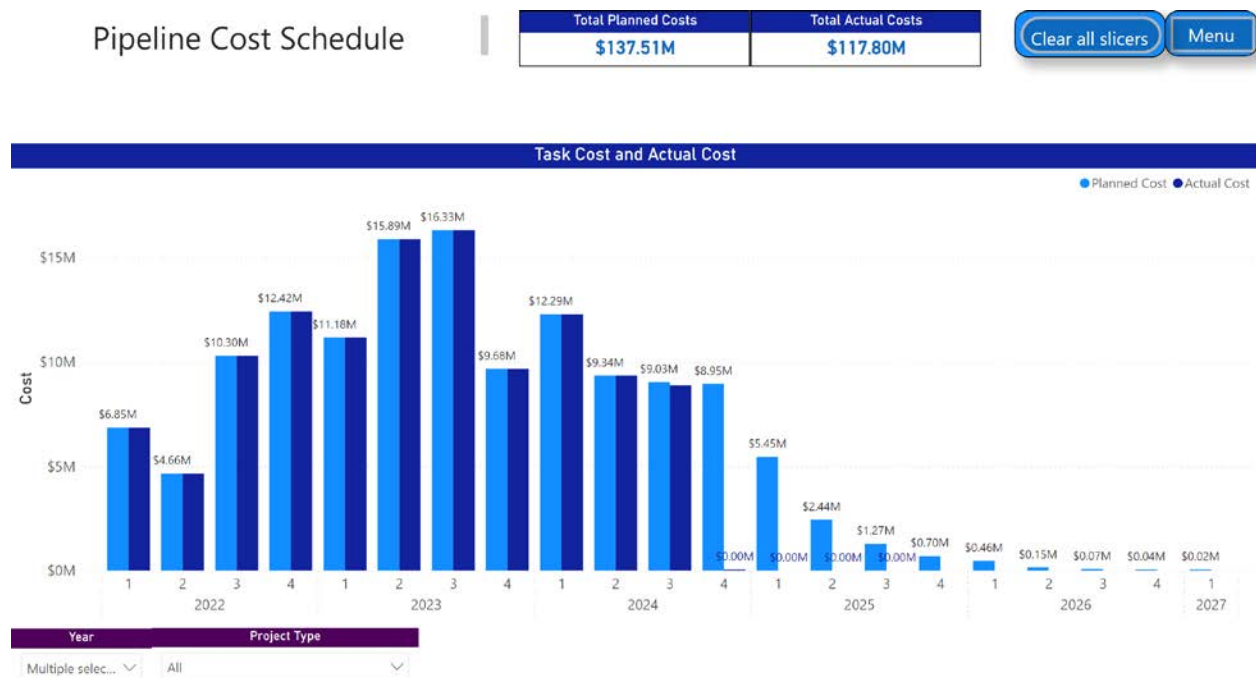
The pipeline programs have key metrics that should be frequently reported to demonstrate progress through the commercialization life cycle. This example shows progress on regulatory filings and clinical trials. We are experts at generating dashboard visuals like this.



Pipeline Portfolio Costs

Cost information is critical to accurately plan and track in the financially intensive therapy development process. The analytic capabilities of Power BI can easily help you achieve this, and we know how to get your cost information and present it to your financial stakeholders at the level they need it at.

The following report is needed by finance departments to assess forecasts and actual costs at a portfolio macro level. We have the expertise to pull this data from your project management system or your ERP and present it in this easy to use time-phased column chart.



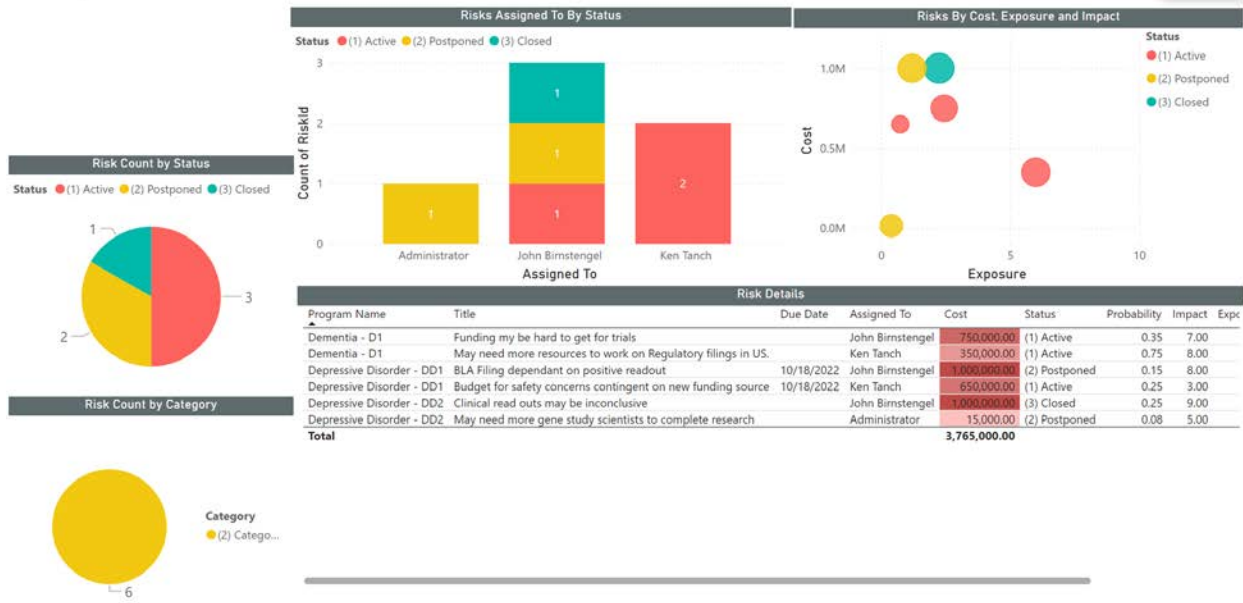
Pipeline Risks

Every program progresses unevenly as seen and unforeseen events come up that obstruct progress. To deal with this situationally, it is imperative to be able to easily present known risks to project stakeholders so they can plan for and react to them as optimally as possible.

Our expertise at risk management reporting is displayed on the following analytical report of pipeline portfolio risks. Key metrics including status, priority, assignee and cost for these are tracked and reported in the graphical visuals on this page.

Pipeline Risks

Menu



Program Visuals

The visuals above provide an overall assessment of the pipeline at large, but it critical to delve into the details of each program too. In the Power BI visuals below, we provide insights into how each program is doing on its own.

Program Metrics

This first visual provides an overall assessment of a program by reporting on detailed schedule metrics like assignments work, task work package types, vendor tasks, tasks by Initiate code, key milestones, and % complete. The important idea here is that any of your own lifecycle, market, functional, or medicinal codes can be set up in the schedule and reported in easily understandable visuals in Power BI.

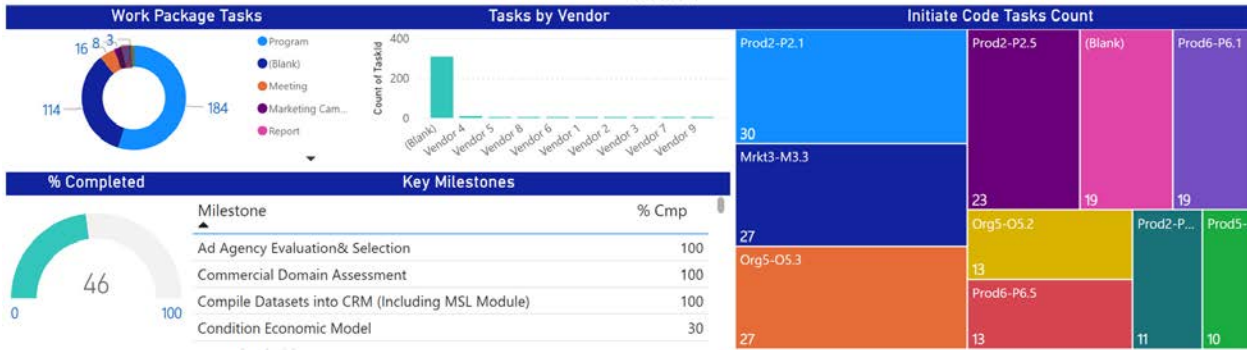
Program Metrics

Program Name

Covid - C1

Project Link

Menu



Program Type: All | Program Name: Depressive Disorder - DD2

Project Costs Chart and Table

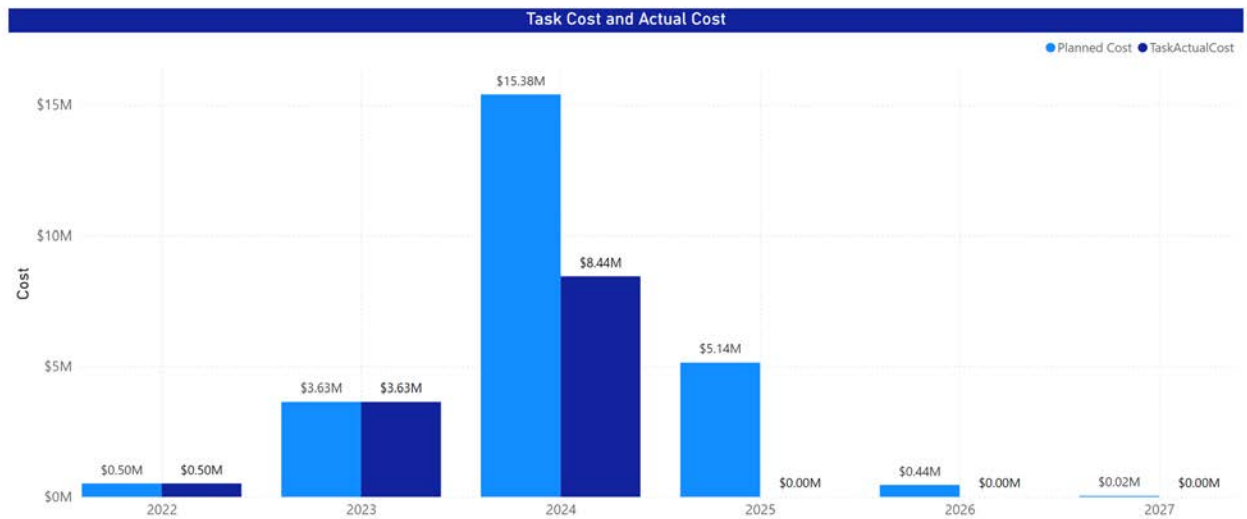
Detailed costs can be tracked in the MS Project schedule and similar to the portfolio level can be reported out in a time-phased fashion so a client's Finance organization can easily assess the cost implications of each program. The following pages show costs over time in a column chart and in a Excel exportable table.

P3 Program Cost Schedule

Program Name

Depressive Disorder - DD2

Menu



Program Type: All | Program Name: Depressive Disorder - DD2



Task Cost Schedule

Program Name
Depressive Disorder - DD1

Clear all slicers Menu

Cost Table									
Year	2022							2023	
InitiateCode	Total	1	2	3	4	Total	1	2	
Mrkt1-M1.1	\$749,120	\$749,120	\$127,774	\$28,054	\$27,216	\$26,804	\$209,849	\$26,804	\$26,804
Awareness Trial& Usage (ATU) Studies			\$18,144	\$26,804	\$27,216	\$26,804	\$98,969	\$26,804	\$26,804
Commercial Domain Assessment	\$200,000	\$200,000							
Introduction Sequencing by Country	\$200,000	\$200,000							
Patient Services Research	\$18,750	\$18,750	\$80,000	\$1,250			\$81,250		
Pricing& Re-imbursement Analysis (Preliminary)	\$170,370	\$170,370	\$29,630				\$29,630		
ROW Domain Sizing	\$160,000	\$160,000							
Mrkt1-M1.2	\$150,000	\$150,000							
Patient Journey Development	\$150,000	\$150,000							
Mrkt1-M1.3	\$209,099	\$209,099	\$76,470	\$72,886			\$149,356		
Develop Condition Burdon Model	\$209,099	\$209,099	\$76,470	\$72,886			\$149,356		
Mrkt1-M1.4	\$31,250	\$31,250	\$43,750				\$43,750		
Competitive Assessment	\$31,250	\$31,250	\$43,750				\$43,750		
Mrkt1-M1.5			\$75,000				\$75,000		
Total	\$4,085,286	\$4,085,286	\$2,849,277	\$2,651,628	\$3,787,875	\$6,096,028	\$15,384,808	\$1,684,848	\$846,600

Resource Management Reporting

Managing the demand for resources is a critical component to project and portfolio management. The key questions, as we look across the pipeline portfolio, are many including:

- What task assignments do our groups and staff have and when are they occurring?
- Do we have enough resource bandwidth to cover the programs we are launching and executing?
- When is the bandwidth needed?
- When are we overloaded?
- Which programs are involved.
- Can we forecast our future demand?

WGA's Power BI Portfolio reporting capabilities can answer these questions and more. We understand portfolio resource management and what it entails. We have the expertise to help our clients here.

Resource Project Assignments

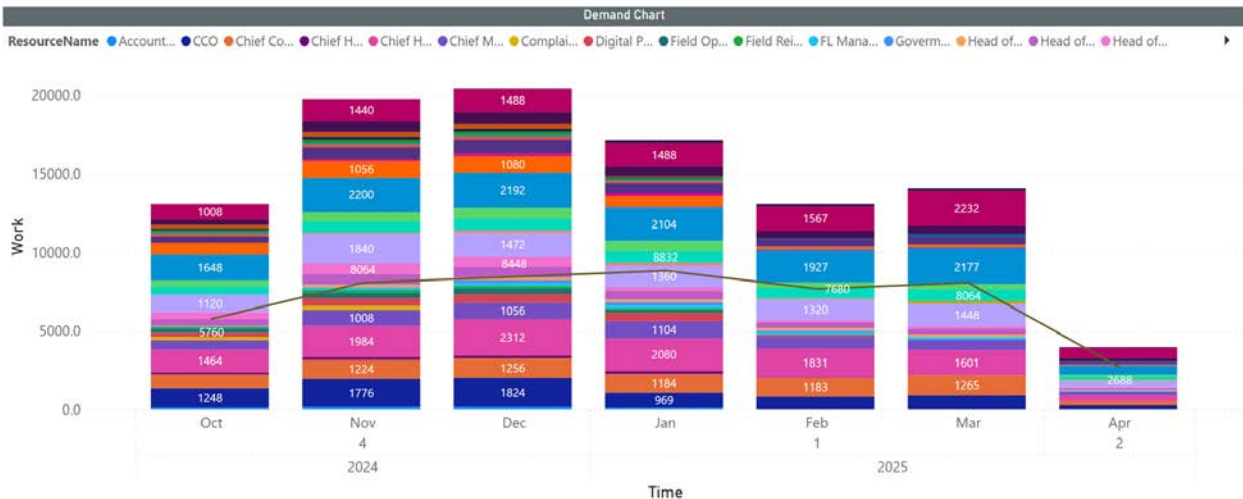
In the following Power BI page, we see the assignments of a selected set of resources and programs helping program managers, resource managers, and staff plan for the upcoming work.

Assignments						
ResourceName	TaskName	Start Date	Finish Date	Work	Project	
Trade and Patient Services (HUB)	COE Distribution Strategy	1/3/2022	6/17/2022	960.00	Dementia -	
Unassigned Resource	COE Distribution Strategy	1/3/2022	6/17/2022	0.00	Dementia -	
Head of Promoting Access	Domain access / KAM / NAM hiring, training, and action plan	1/26/2023	4/19/2023	480.00	Dementia -	
Learning and Development	Domain access / KAM / NAM hiring, training, and action plan	1/26/2023	4/19/2023	480.00	Dementia -	
Unassigned Resource	Domain access / KAM / NAM hiring, training, and action plan	1/26/2023	4/19/2023	0.00	Dementia -	
CCO	Domaining & commercial operations hiring, training, and action plan	5/9/2022	7/29/2022	480.00	Dementia -	
Unassigned Resource	Domaining & commercial operations hiring, training, and action plan	5/9/2022	7/29/2022	0.00	Dementia -	
Chief Consumer Promoting	Drafting and Revisions	5/6/2021	7/14/2021	400.00	Dementia -	
Mgr Relations Analytics	Launch Budget	6/20/2022	9/9/2022	480.00	Dementia -	
Relations Analytics	Launch Budget	6/20/2022	9/9/2022	480.00	Dementia -	
Chief Consumer Promoting	LSI Refresh Post Patient Journey	7/15/2021	8/11/2021	160.00	Dementia -	
Head of Promoting	LSI Refresh Post TLR	8/1/2022	8/26/2022	160.00	Dementia -	
Field Medical Activities	Medical affairs / MLS hiring, training, and action plan	1/3/2022	3/25/2022	480.00	Dementia -	
Medical Activities	Medical affairs / MLS hiring, training, and action plan	1/3/2022	3/25/2022	480.00	Dementia -	
Unassigned Resource	Medical affairs / MLS hiring, training, and action plan	1/3/2022	3/25/2022	0.00	Dementia -	
Unassigned Resource	Pharmacovigilance (PV) / medical safety set up	1/26/2023	4/19/2023	0.00	Dementia -	
Total				285,032.00		

Program Name: Dementia - D1 | RBS: All | Generic?: All | Resource Name: All

Resource Demand Forecast

The actual capacity vs work comparison is critical for understanding where resources are overbooked and so adjustments can be made. The page below shows a demand column chart for a filtered set of resources over time. Overallocations can be easily identified with this.



Select the date range: 8/27/2022 - 2/9/2027 | Next Six Months?: True | Generic?: All | RBS: All | Resource Name: All | Project: Multiple selections



Resource Programs Capacity Table

Dropping down to a lower level, we can display this same demand information in a table sliced by resource and then by program so detailed adjustments can be determined and made.

* This same work information can also be calculated in terms of cost by adding rates to the resources in the system.

Resource Projects										
Year	2024									2025
Month	Oct			Nov			Dec			Jan
Resource	Capacity	Work	Availability	Capacity	Work	Availability	Capacity	Work	Availability	Capacity
Trade and Patient Services (HUB)	120		120	168		168	176	16	160	168
Specialty Deals	120	1008	-888	168	1440	-1272	176	1488	-1312	168
Depressive Disorder - DD2			120			168			176	
Dementia - D1		504	-384		720	-552		744	-568	
Covid - C1		504	-384		720	-552		744	-568	
Relations Operations	120	328	-208	168	656	-488	176	704	-528	168
Relations IT	120	240	-120	168	336	-168	176	336	-160	168
Relations Analytics	120	88	32	168	168	0	176	176	0	168
Regulatory Promotional Chief	120		120	168		168	176		176	168
Promoting Operations	120		120	168		168	176		176	168
Primary Account West	120	120	0	168	168	0	176	176	0	168
Primary Account East	120	120	0	168	168	0	176	176	0	168
Primary Account	120	120	0	168	168	0	176	176	0	168
Resource Total	5760	13088	-7328	8064	19760	-11696	8448	20408	-11960	8832

Select Broad Date Range:	Next Six Months?	Generic?	RBS	Resource Name	Program
10/11/2024 - 4/9/2025	True	All	All	All	Multiple selections